



F L O W E R  
T O W E R S

CAMELLIA

LEÇA DA PALMEIRA

FLOWER TOWER CAMELLIA

- 2 A NEW TOWER WILL RISE
- 4 THE TOWER THAT DESIGNS THE FUTURE
- 6 QUALITY OF LIFE IN EVERY DETAIL
- 24 A COMPLETE SPACE FOR YOUR WELLBEING
- 30 THE FLOWER TOWERS PROJECT IS SIGNED BY OODA
- 34 A BUILDING IN HARMONY WITH THE FUTURE

DISCOVER THE BEST OF LEÇA DA PALMEIRA

- 40 A TRANQUIL LIFESTYLE WITH AN URBAN SPIRIT
- 46 ALL PATHS LEAD TO THE SEA
- 50 GET TO KNOW OUR LAND
- 54 FIVE WONDERS OF LEÇA DA PALMEIRA
- 58 A JOURNEY THROUGH THE FLAVOURS OF LEÇA IN
- 64 SHAPE
- 68 LEÇA LITTLE ONES

WITH CONTENT BY

**TimeOut**

INVESTMENT VIZTA  
ARCHITECTURE OODA  
TEXTS TIME OUT  
PROOFREADING MIMIU.PT

3D IMAGES OODA  
PHOTOGRAPHS TIME OUT  
EDITORIAL DESIGN LOVE STREET STUDIO



# A NEW TOWER WILL RISE

To live in the Flower Towers is to choose more quality of life. Leça da Palmeira is in growing demand due its authenticity. Here, history, architecture, nature and a youthful spirit come together.

Flower Tower Camellia will be the second tower of the promotor, featuring 21 floors and 134 apartments.





## THE TOWER THAT DESIGNS THE FUTURE

A project signed by OODA architecture firm, the two residential towers stand out for their original architecture, inspired by features that mark this location.

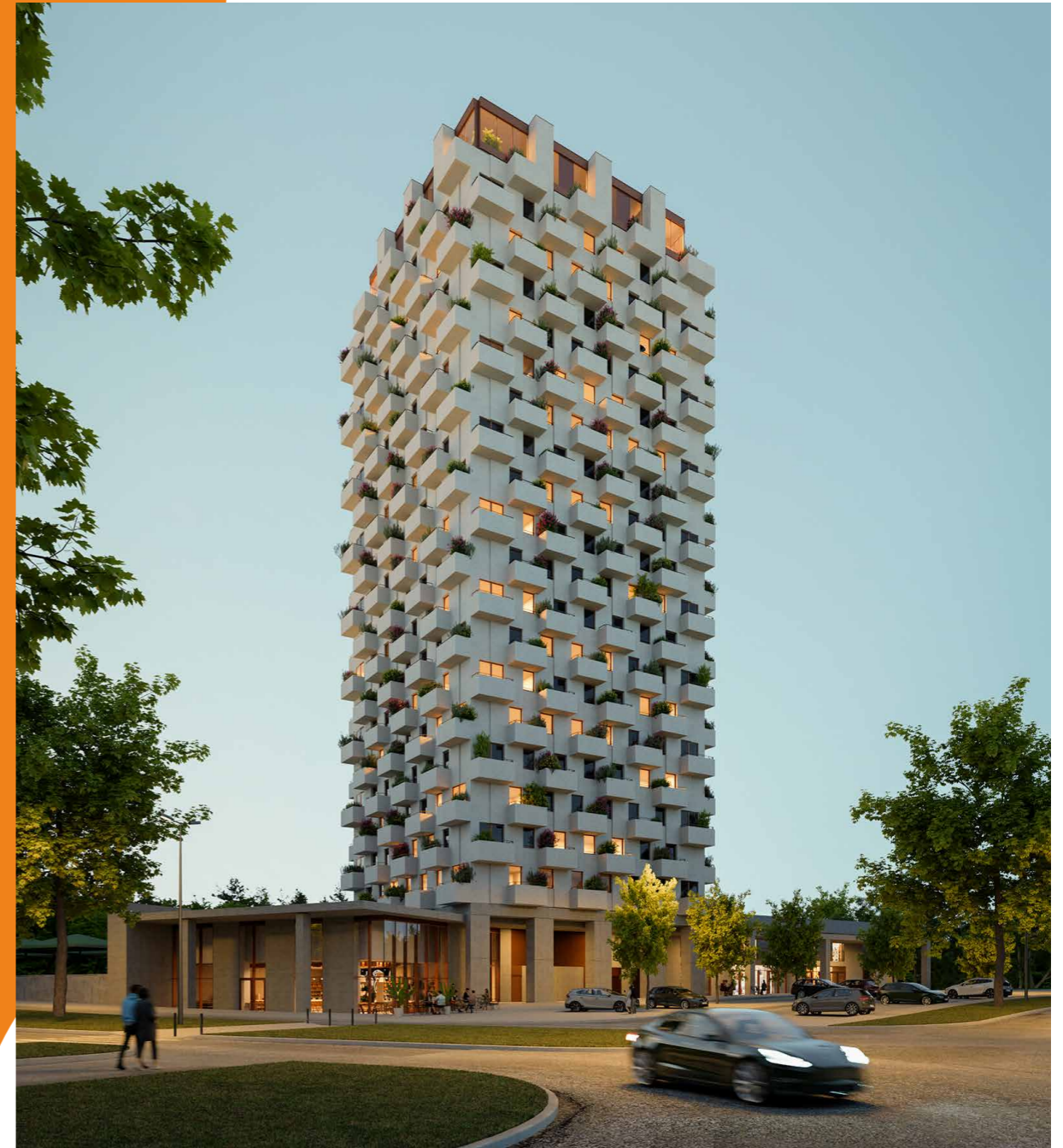
The Flower Towers offer apartments with unique features, standing out for their verandas, ample windows, and flexible and functional interior spaces.





# QUALITY OF LIFE IN EVERY DETAIL

The new Flower Tower offers five typologies: from Studio to 2-Bedroom



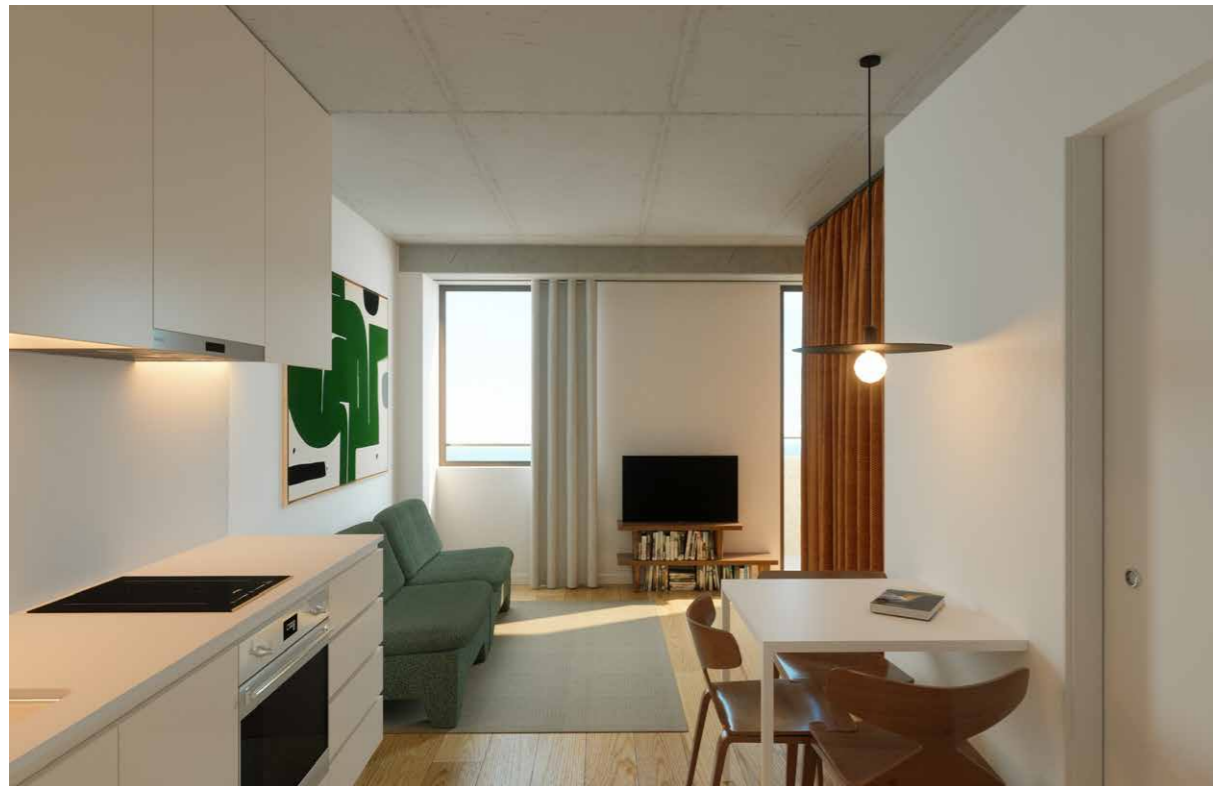
All 134 apartments were designed in great detail, to offer major functionality, giving precedence to natural light, connecting with the outdoors and common spaces. These homes meet new residential standards, concepts and needs.

Balanced areas with well-organised interior spaces that provide a practical and sustainable use, with modern and original finishings, always accentuated by a veranda.

# T1 STUDIO

## FLEXIBLE & INNOVATIVE SPACE

Our STUDIOS were designed efficiently to bring innovation to the classic open-space studio. These apartments are extremely functional and practical, conceived to guarantee storage and comfort. They offer the unique feature of isolating the bedroom area using a blackout curtain, always maximising the veranda and natural light.



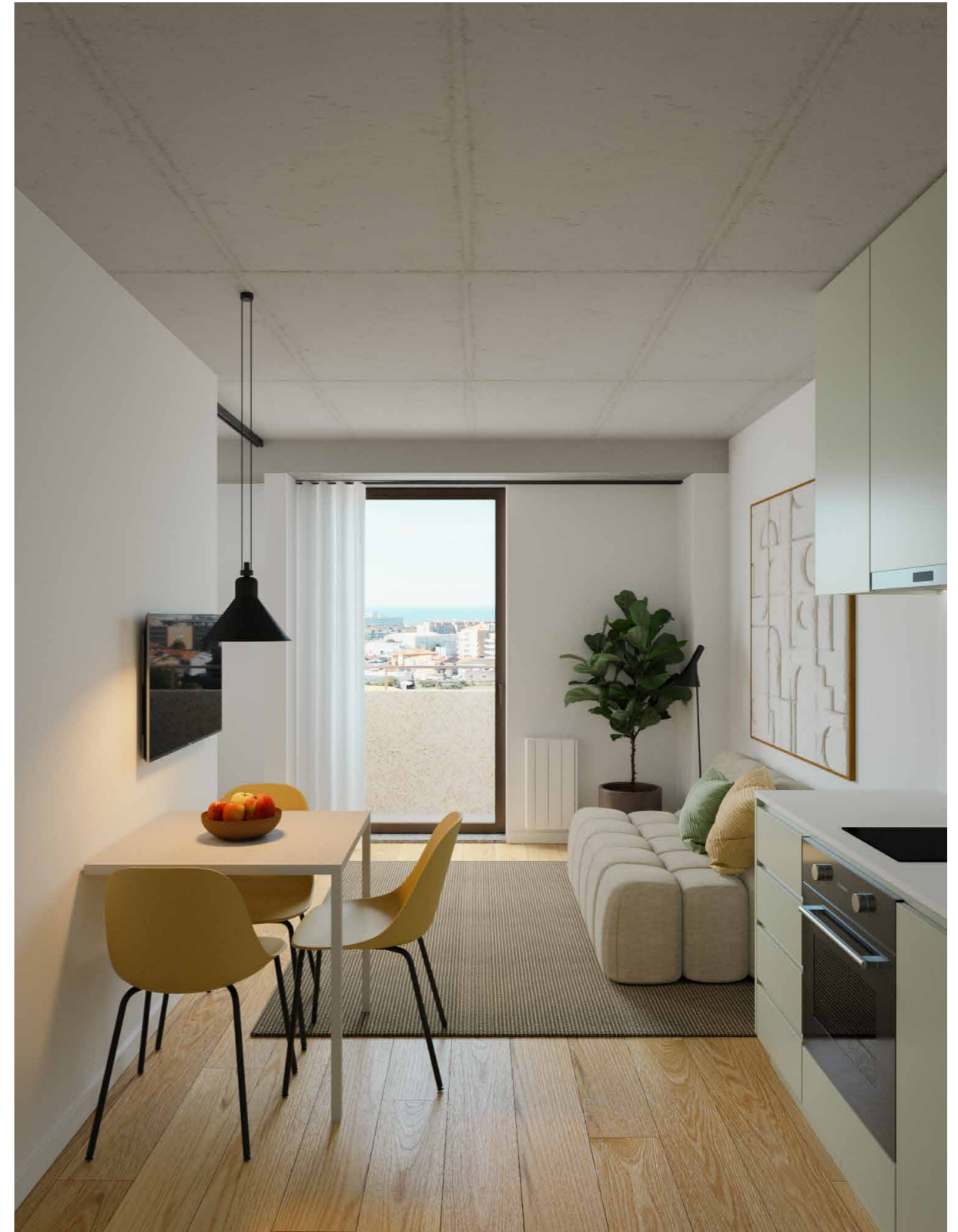




# SMART 1-BEROOM

## PRACTICAL & MODERN

This typology can be lived as a traditional 1-Bedroom, or as an open space. These apartments feature the possibility of separating the living room and bedroom using a sliding door, transforming the space into an apartment with a living room and bedroom.





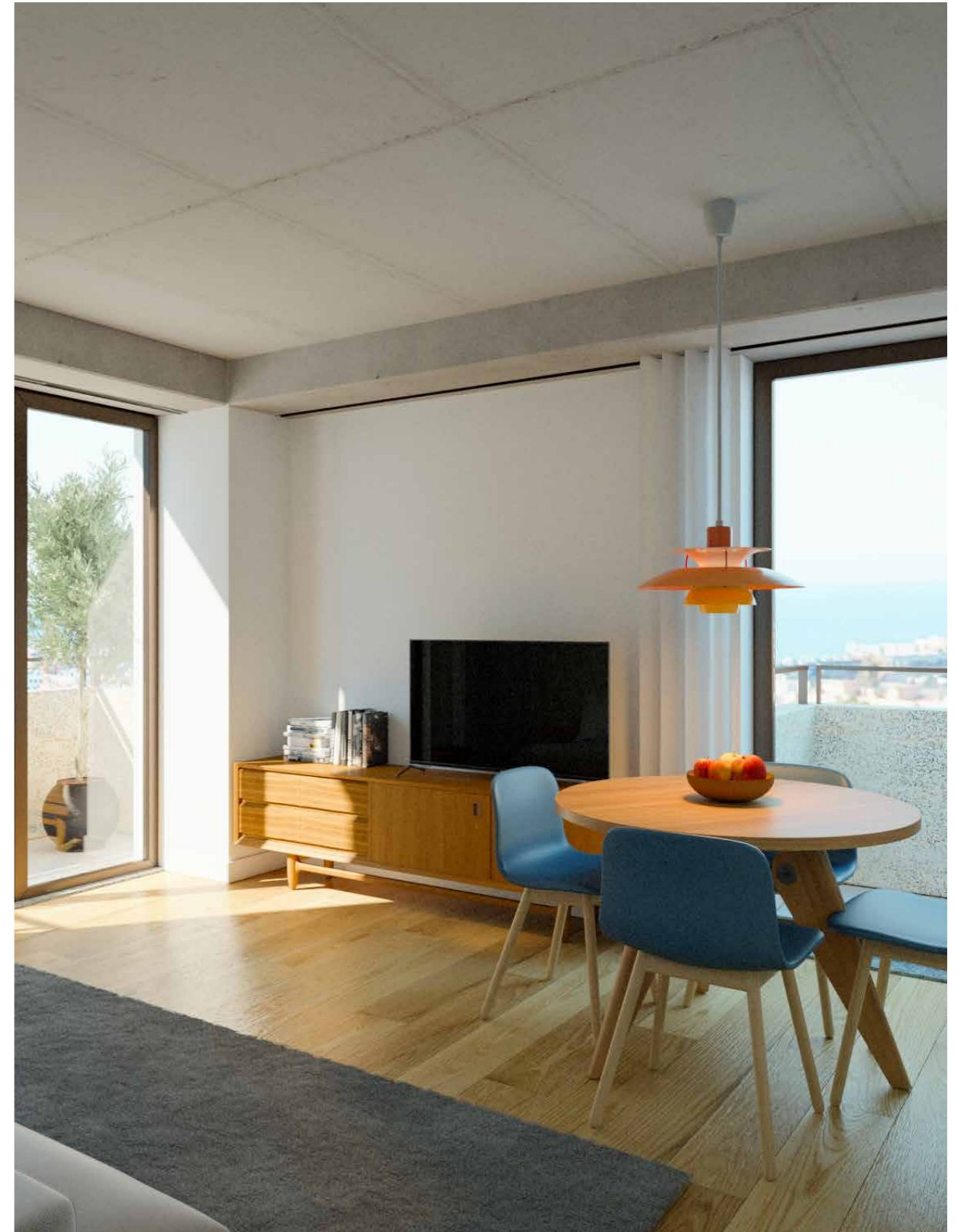




# SMART 2-BEDROOM

## VERSATILE ROOM

In addition to the master bedroom, the Smart 2-Bedroom apartments offer an additional room that is versatile and bathed in natural light, adapted to the changes of modern life, which can be used as a bedroom or an office. The perfect combination of efficiency and functionality to maximise space.





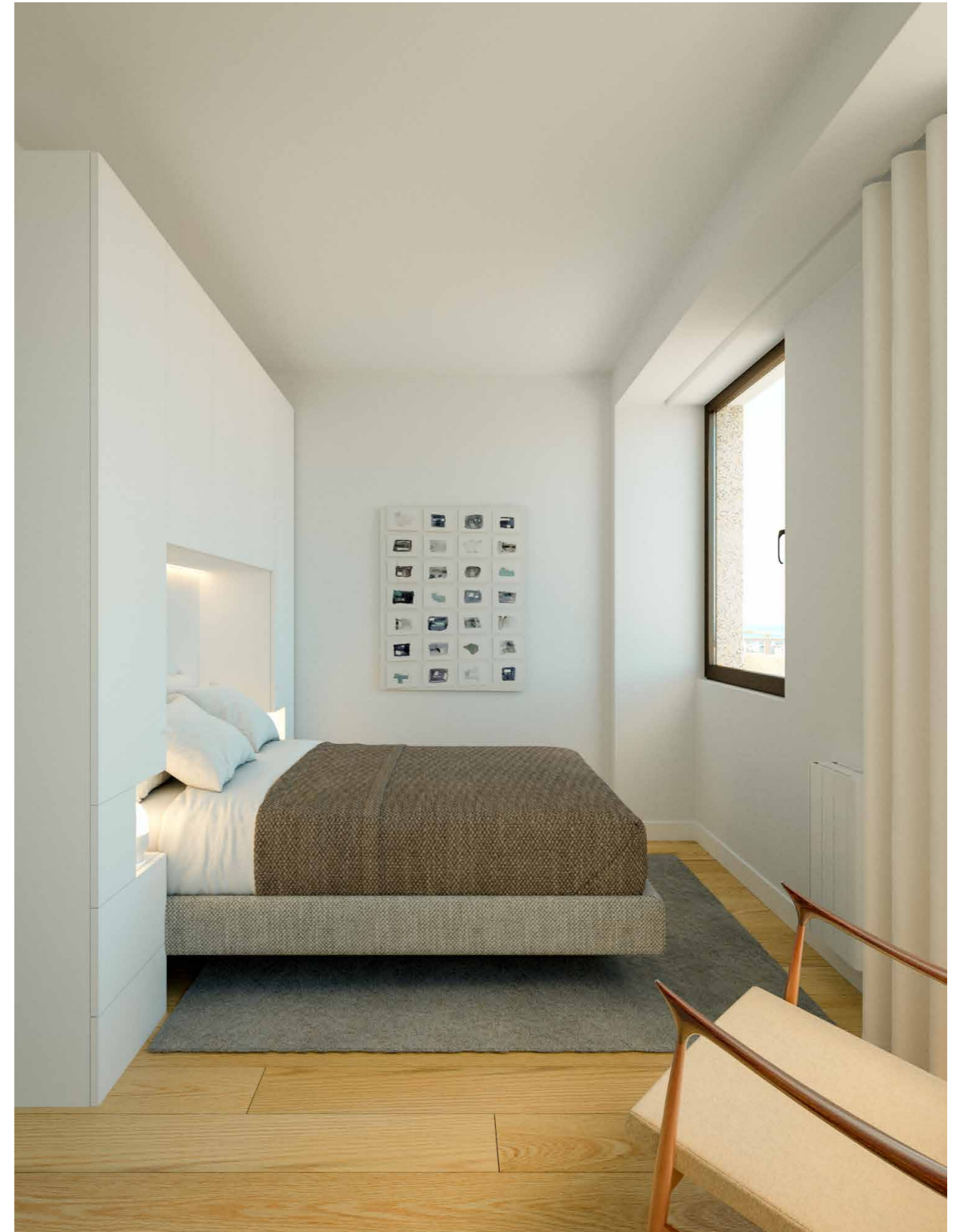
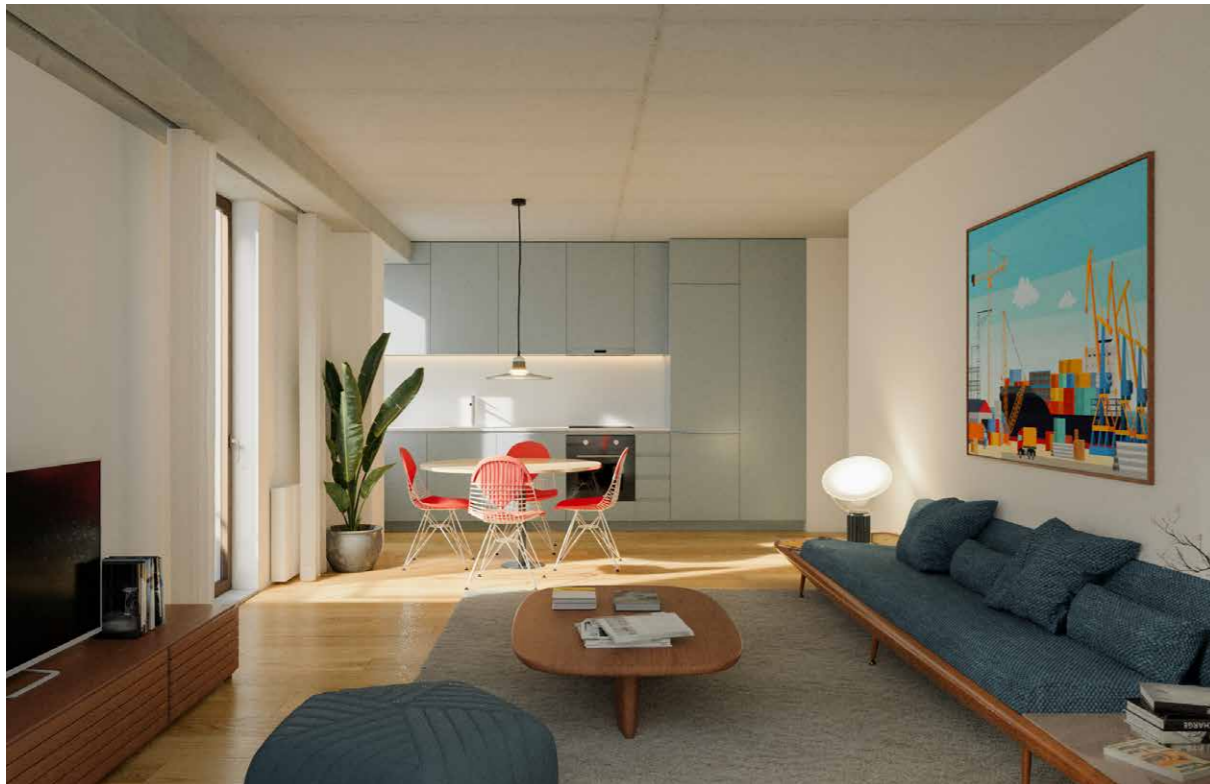




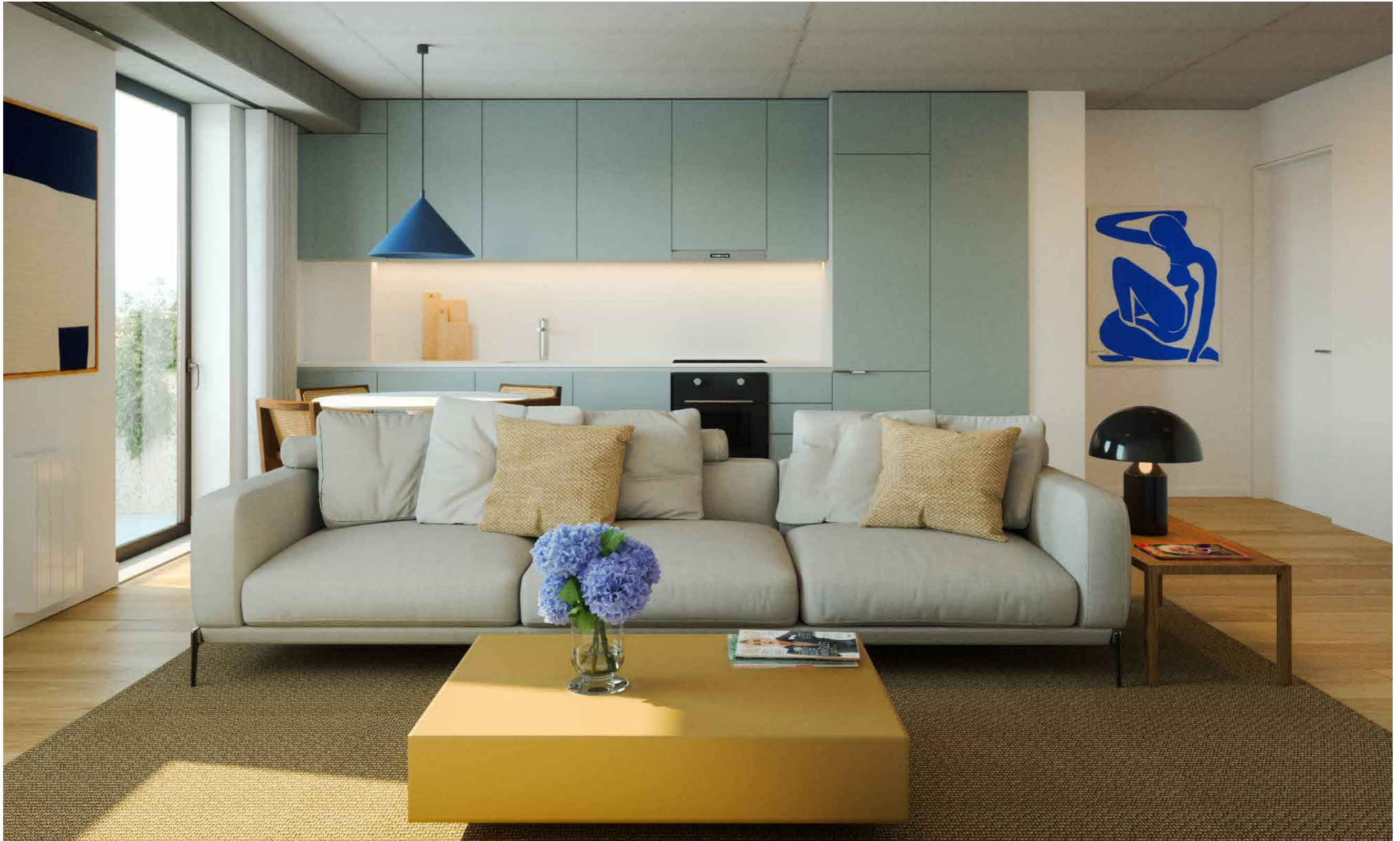
# 2-BEDROOM

## COMFORT & FUNCTIONALITY

The 2-Bedroom apartments were designed to meet different needs, with a functional and practical layout. Bold and modern, they offer two bedrooms, a living room with open-plan kitchen, and verandas with plenty of natural light. These are the ideal homes to guarantee family comfort.





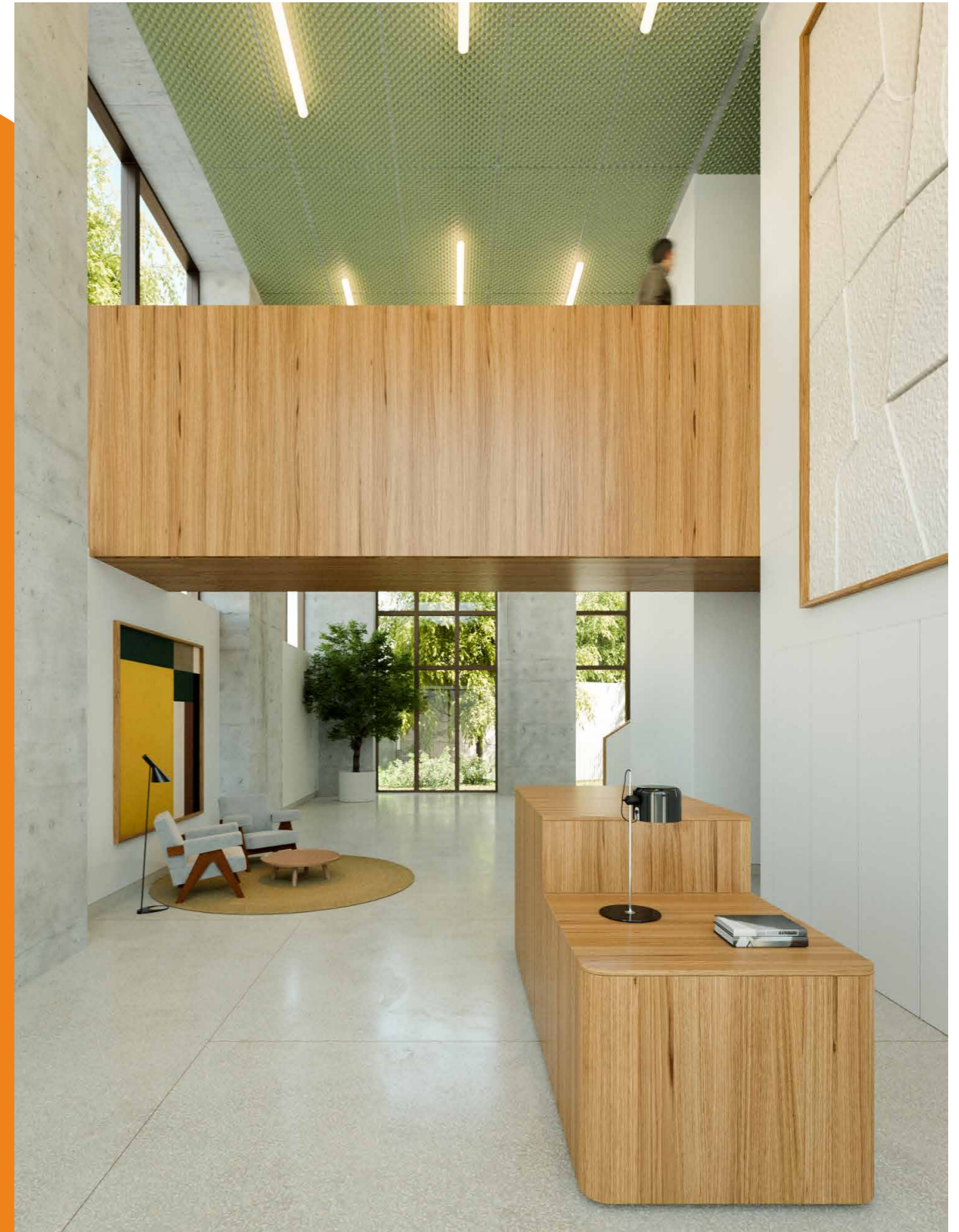




# A COMPLETE SPACE FOR YOUR WELLBEING

Nothing was left to chance. In addition to the well-designed apartments, the interior and exterior common spaces of the Flower Tower Camellia offer a complete experience and the quality of life you seek.

The building entrance features a modern lobby, with a double-height ceiling and ample windows that provide a sophisticated atmosphere bathed in natural light.









## COMMON SPACES

With access to a private garden, the multipurpose room can also function as a coworking space or venue for parties and condominium meetings.

## PARKING & STORAGE

To offer its residents greater convenience, the building offers parking and storage for all apartment typologies.

## ELECTRIC VEHICLE CHARGERS

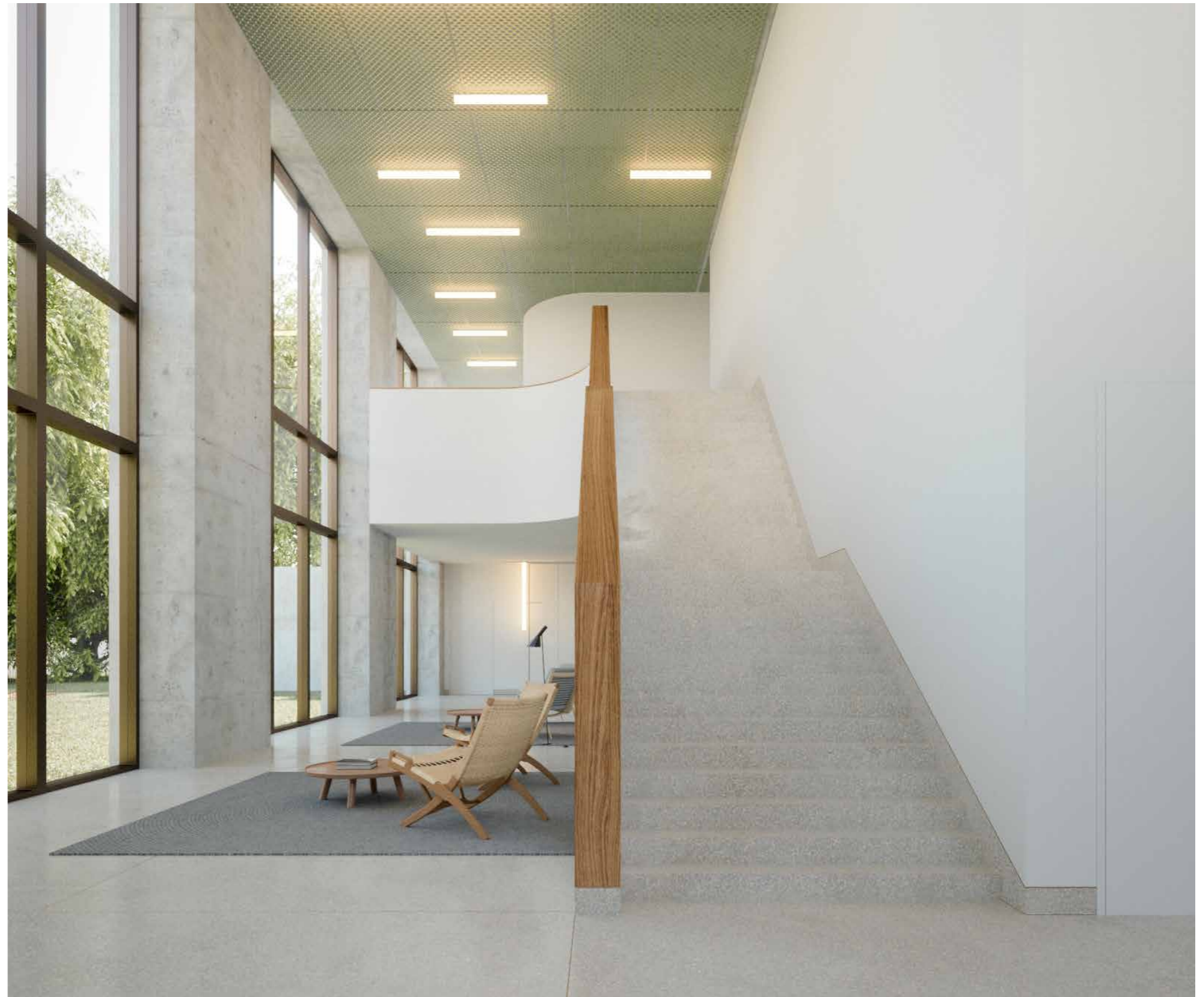
Sustainability is important to us. The Flower Tower provides charging stations for your electric vehicle.

## FITNESS SPACE

A fully equipped space located on the ground floor for residents to exercise, with total privacy, served by bathrooms and offering direct access to the outdoor garden.

## PRIVATE OUTDOOR SPACES & HERB GARDEN

Ao redor da Flower Tower haverá espaços verdes privados para que possa aproveitar o melhor da vida ao ar livre.

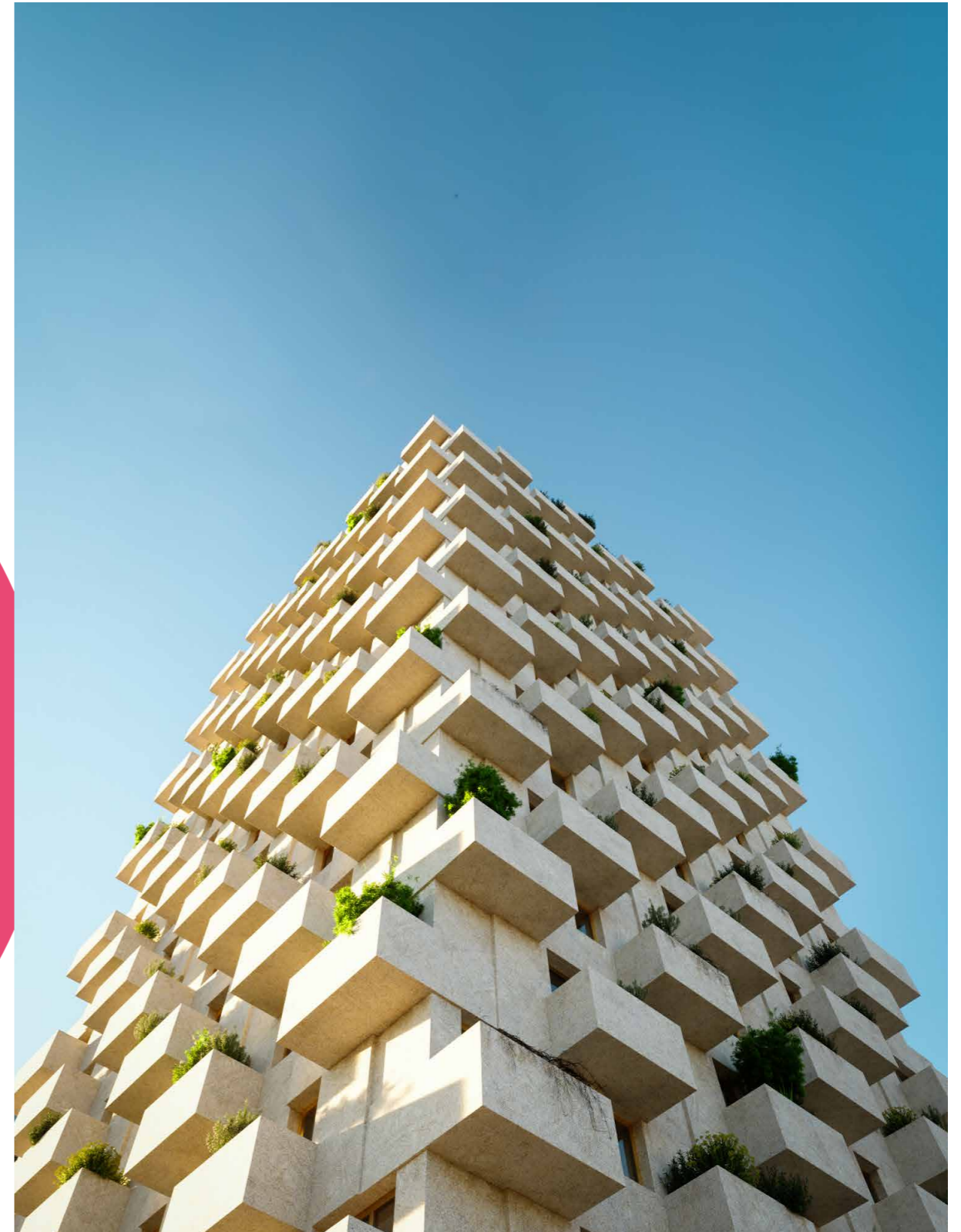




# THE FLOWER TOWERS PROJECT IS SIGNED BY OODA



Architecture





We visited the location and were very inspired by the repetition of the metric found in the Port of Leixões, very inspired by the granite cube that is on almost every street in the area, and we tried to reproduce that image to a certain extent.

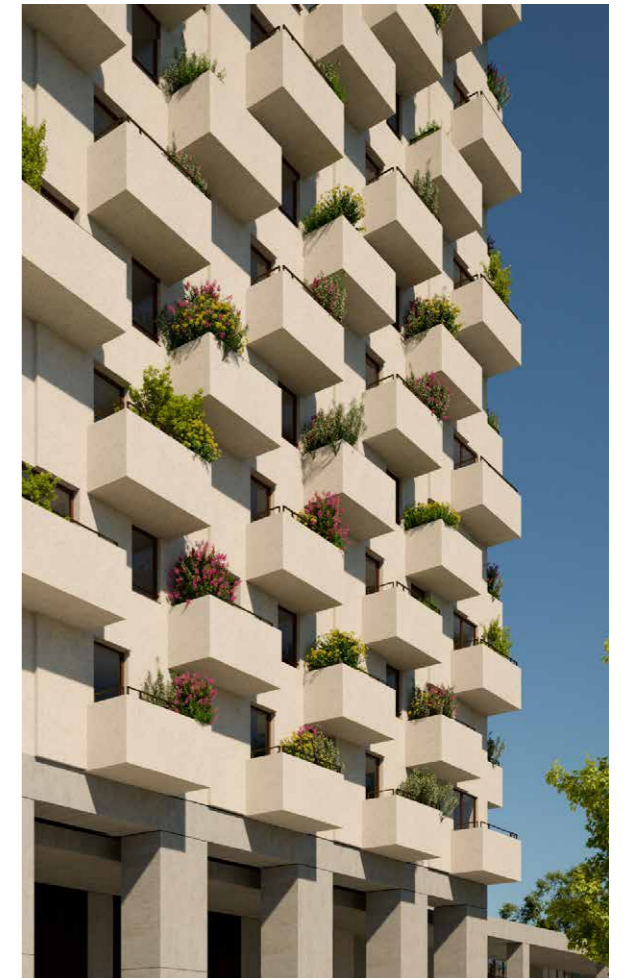
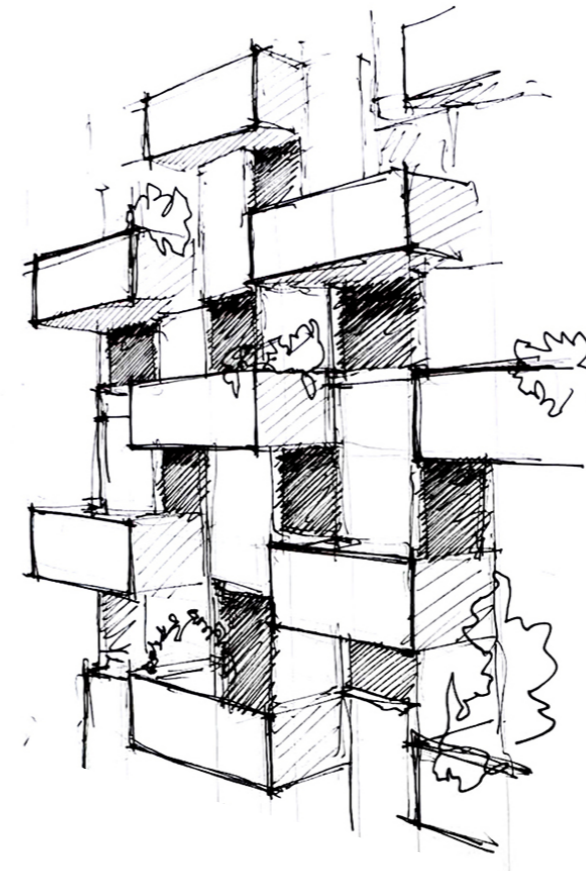
— OODA, Arquitectura

Oporto Office for Design and Architecture (OODA) is an intuitive architecture firm based in Porto and led by Diogo Brito, Francisco Lencastre, Rodrigo Vilas-Boas, João Jesus and Julião Pinto Leite. Established in 2010, the firm operates all over the world, focusing on the production of relevant, meaningful and quality projects.

With sensitivity, optimism and years of experience, the firm handles a vast range of projects, from private residences to large-scale hotels, from institutional buildings to museums and religious spaces, and even small pieces of furniture.

Behind each project, there are various references and inspirations, different narratives and perceptions that, altogether, aim to express an architectural process that is thoughtful and meaningful in every aspect.

For the Flower Towers design, the location itself served as inspiration. The repetition of the metric found in the Port of Leixões and its containers, as well as the granite cubes on almost every street in the area, resulted in a building that evokes the games of Tetris or Jenga towers.





# A BUILDING IN HARMONY WITH THE FUTURE

This a sustainable construction building, where the balance between economic and environmental efficiency and effectiveness prevails.



## NATURE

- Three common terraces encourage community living for residents to meet and share
- Landscaped terrace with trees in raised planters
- Terrace equipped with structure prepared for residents to plant community vegetable gardens
- Private verandas with planters (+ 50%)
- Selection of native plant species
- Installation of urban furniture to maximise the use and enjoyment of outdoor spaces
- Guide to raise awareness among residents regarding ecological maintenance (without phytosanitary products) of the green spaces (provided by the promotor)
- The promotor's support in the maintenance of green spaces in the first two years



## SUSTAINABILITY

- Prevalence of national brands and/or production materials, thereby reducing the carbon footprint of transport
- Selection of superior quality and durable materials



## ENERGY EFFICIENCY

- Common areas with low consumption LED lighting, activated by motion detector, for greater energy savings
- Apartments with low consumption LED lighting
- Heat pumps to produce sanitary hot water (SHW)



## THERMAL & ACOUSTIC EFFICIENCY

- Fire-resistant façade system with high thermal and acoustic efficiency
- Highly durable and washable cladding
- Daylight harnessing
- Double-glazed, insulated windows with low thermal transmittance



## WATER EFFICIENCY

- Efficient faucets with flow control/reduction system and class A water efficiency rating
- Efficient showers with flow control/reduction system and class A water efficiency rating
- Low consumption dual flush toilets



Leça da Palmeira the ideal place  
to live, at any time of year,  
and to grow, at any time of life.

— Time Out





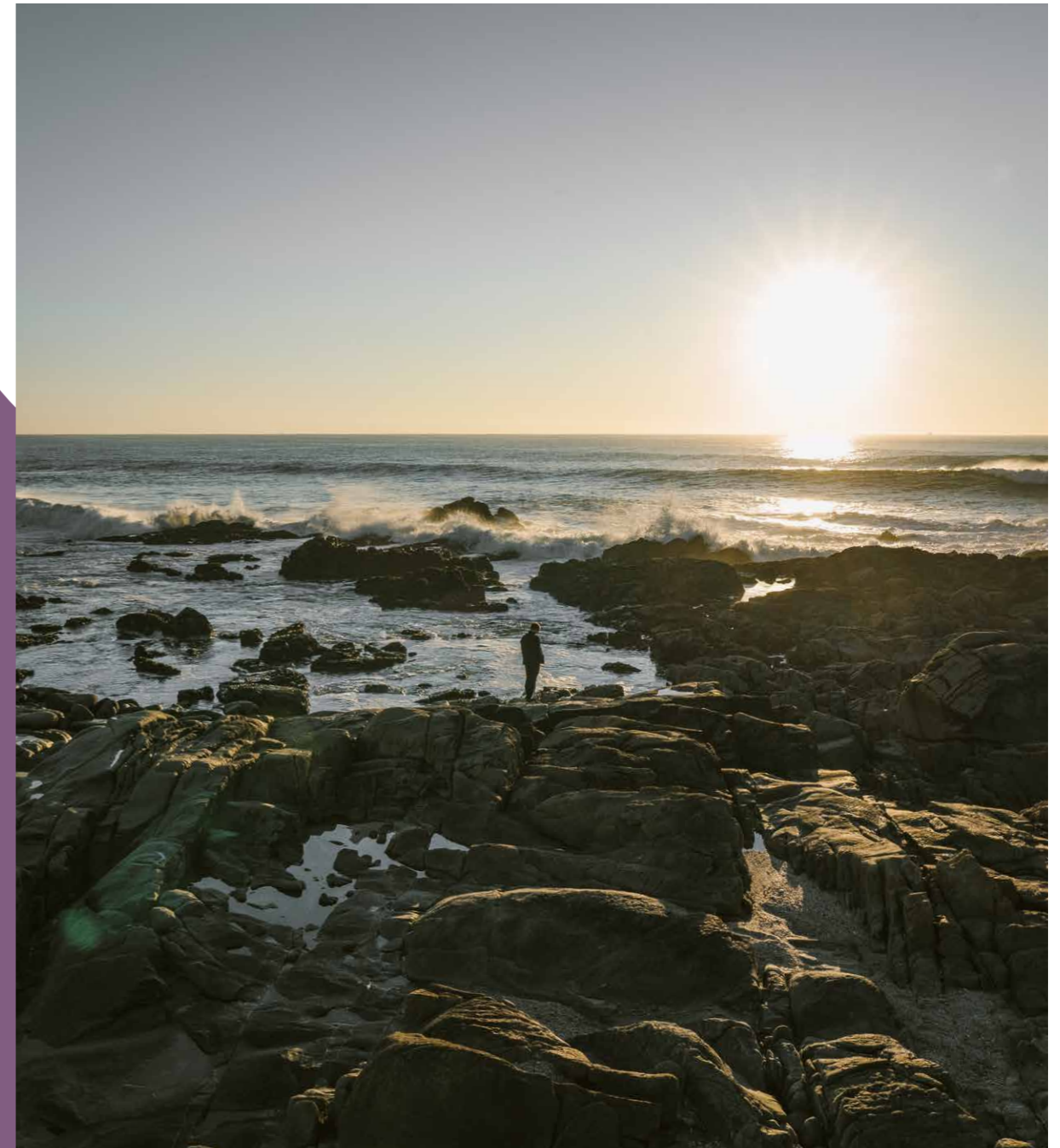


DISCOVER  
THE BEST  
OF LEÇA DA  
PALMEIRA

WITH CONTENT BY

TimeOut

# A TRANQUIL LIFESTYLE WITH AN URBAN SPIRIT



Leça da Palmeira is a place with a youthful spirit, where you can enjoy beautiful walks by the sea and a variety of water sports. The town is also considered an architectural icon in Portugal, featuring various impressive projects by the renowned architect Álvaro Siza Vieira.

Regarded as one of the best places to live, Leça da Palmeira offers security, air quality and healthcare spaces, as well as a wide range of restaurants, sports and leisure facilities to satisfy the most discerning patrons.





## Nature thrives in Leça da Palmeira, blending harmoniously with the surrounding heritage and architecture.

In warm weather, enjoy swimming and sunbathing on the long sandy beaches. On chilly days, a cosy conversation at a beach bar is always a good choice. Nature thrives in Leça da Palmeira, blending harmoniously with the surrounding heritage and architecture. A park with woods, leafy lanes and inviting lawns, features granite fountains, majestic porticoes, columns and statues, but also dedicated spaces for leisure, such as a swimming pool designed by Siza Vieira and two tennis courts. And, of course Leça also offers a great variety of eclectic cuisine, with traditional restaurants offering typical Portuguese food, as well as spaces with two Michelin stars, at the forefront of the finest gastronomy. All of this makes Leça da Palmeira the ideal place to live, at any time of year, and to grow, at any time of life.

Visiting the Leixões Cruise Terminal is always fun, as this space frequently features shows and exhibitions. And going from here to Casa de Arquitetura takes only an instant: just 850 metres separate the two spaces. Casa da Arquitetura (*House of Architecture*), in Matosinhos, operated for ten years until 2017, in a building owned by the Siza Vieira family, natives of the town. After this, it housed the Real Companhia Velha port wine company, and today it is an exceptional place dedicated to the preservation and dissemination of donated architectural collections, instruments and treasures. If you love art and architecture, you can't miss it! Just 10 minutes away lies the beautiful Serralves Foundation. And you already know there's a great deal to enjoy here. Start with the Museum of Contemporary Art with its temporary exhibitions; visit the Serralves Villa, a unique example of Art Deco architecture; and finish with a walk in the Park — either through the grounds or in the treetops, if you choose the Treetop Walk.



## STRETCH YOUR LEGS BY THE SEA

A walk by the sea not only exercises the body, but also relaxes the mind. The ocean has a therapeutic effect and many residents and visitors take their daily walks along the Leça da Palmeira promenade, designed by Siza Vieira and inaugurated in 2005. On the weekend, venture out along the more than ten kilometres of seafront that join Leça and Angeiras. Part of the route is made on walkways over the dunes, perfect for filling your lungs with fresh air. Offering footpaths and roads, this lively area is well integrated into the landscape and filled with people trekking, running and walking their pets, on roller blades, bicycles or scooters. The council offers sustainable options like cycle paths and alternative transport services.

## THE GREEN CORRIDOR

Extending along almost 45 kilometres, the Leça River begins in Santo Tirso, passes through Valongo and Maia, flowing to Matosinhos. And soon there will be a new area to discover, with the construction of a green corridor that is already under way. Representing an investment of 19.7 million euros, this project includes 13 hectares of new green spaces, 820 new trees, four new bridges, seven kilometres of cycling and pedestrian paths, and will benefit 500 thousand residents. Mobility is one of this project's key concepts. Therefore, the entire corridor will be connected to the public transport network and enable the population to travel by means of bicycles, for example. Circulation between the riverbanks will also be guaranteed with the construction of four new bridges in metallic structures, equipping this route with a total of nine bridges.





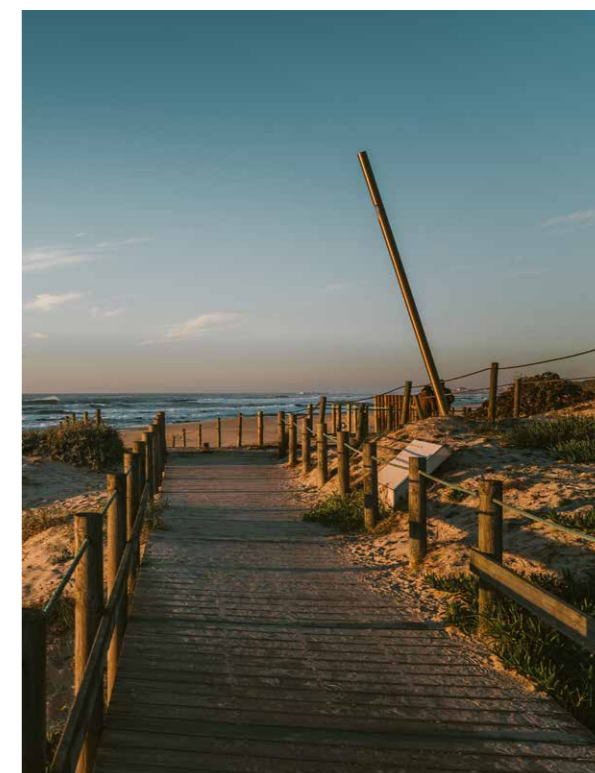
# ALL PATHS LEAD TO THE SEA

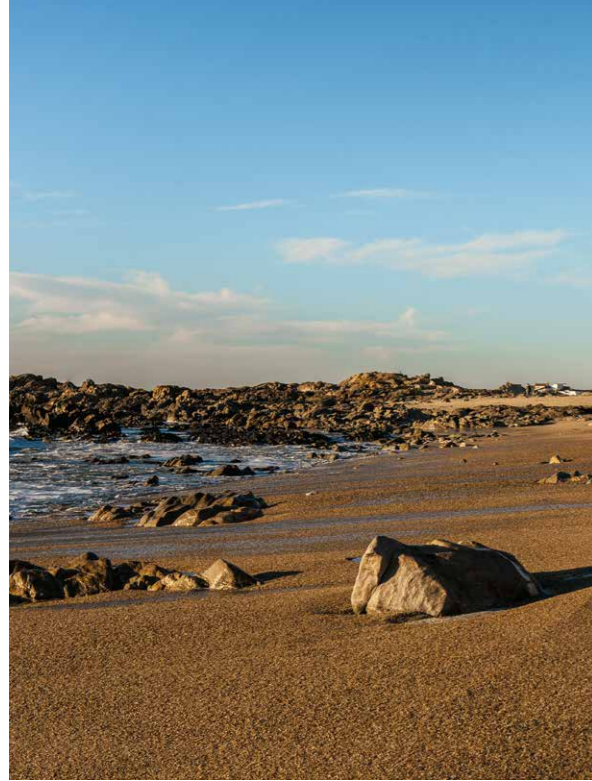
Discover Leça da Palmeira's  
unique beaches

## PRAIA DO ATERRO PRAIA DE LEÇA DA PALMEIRA PRAIA AZUL PRAIA DA SENHORA DA BOA NOVA PRAIA DOS BEIJINHOS

### PRAIA DO ATERRO

Offering beautiful walkways, natural vegetation, ideal conditions for surfing and bodyboarding, as well as beach bars that are popular all year round, Praia do Aterro is a sure thing. L'Kodac, for example, is one of the trendiest spots to enjoy a cocktail (or sangria, beer, juice...) and watch the sunset after a day's work. If you want to relax into the evening, this space offers snacks and food boards to share, as well as other dishes, like aged sirloin steak or grilled prawns. Just a two-minute walk along the sand and offering the same view, Xiringuito is equally famous. Enjoy live music; an irresistible bar selection with a wide range of gins, liqueurs, vodkas and much more; and many delicacies, from carpaccios, to clams Bulhão Pato-style, as well as padrón peppers, 'pica-pau' beef, tartars and ceviches.





## PRAIA DE LEÇA DA PALMEIRA

Offering approximately three kilometres of beaches, Leça da Palmeira is very popular among beach-lovers when the sun heats up. Praia de Leça beach is probably the best known. Featuring a long stretch of sand, good support facilities and a strong swell, this beach is perfect for surfing, bodyboarding and kitesurfing. If you prefer calmer waters, the famous Piscina das Marés (Ocean Pool), further north, is a good choice. Built in the 1960s and designed by Siza Vieira, it was classified as a National Monument in 2011 and lies just beyond the small Praia da Meia Laranja beach. This area also offers many entertainment options, with plenty of bars and restaurants to provide the perfect end to a day at the beach.

## PRAIA AZUL

Nestled in a cove, this beach is shielded from the wind by rocks that extend out to sea, creating a natural barrier that makes it calmer than the neighbouring beaches. Thus, this is the perfect option for those who prefer to avoid the north wind or big waves. Also known as Praia da Conchinha (*Shell Beach*) for its shell-shaped 50-metre expanse of sand, this beach offers easy access, a bar, nearby parking, lifeguard service and support facilities in the summer season.

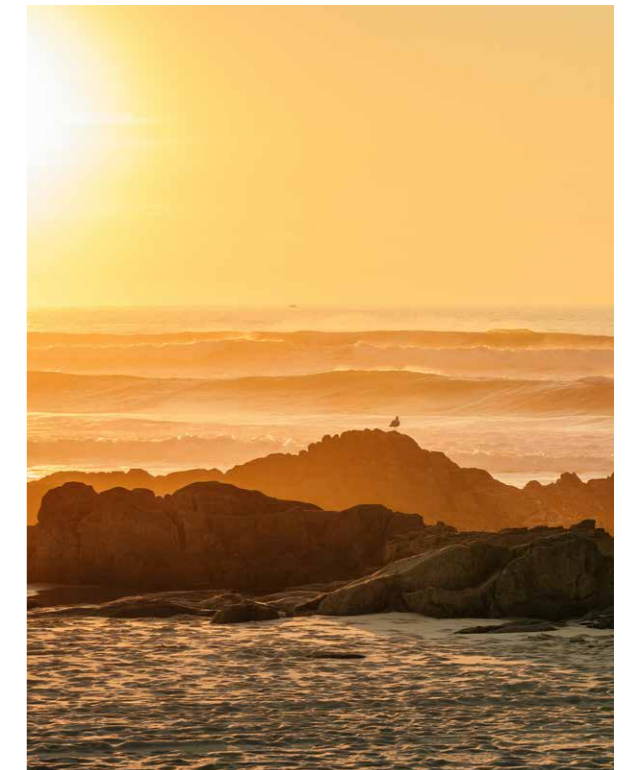


## PRAIA DA SENHORA DA BOA NOVA

Smaller and more secluded, this beach is a good choice for windy days. Here, the Matosinhos architect Siza Vieira, a Pritzker laureate, also made his mark on the landscape, designing the Casa de Chá da Boa Nova tea room. On this beach there is no lack of heritage to admire: to the south, the famous lighthouse, northwards, the Boa Nova Chapel, remnants of the times when this was a monastery inhabited by Franciscan monks, built in the 14th century. Praia da Senhora da Boa Nova has blue flag status, lifeguard service during the summer and the option of renting sun shades and loungers. This beach offers easy access and many parking spaces.

## PRAIA DOS BEIJINHOS

Heading north, you reach Praia dos Beijinhos, which got its name from the great amount of whelks, or "*beijinhos*", aka kisses", found in this location. Be careful where you tread, as this beach is quite rocky. But this is also a good thing, as being separated from the adjacent beaches by rock formations also makes this beach more sheltered. This is a good spot for sport fishing, there are support facilities, such as bathrooms and disability access, and lifeguard service during the summer season. This is also where BeijoBar is located. Perfect to enjoy a beer and lupins, this is the ideal place for a mid-week pitstop to recharge your batteries with the renewed energy only a sea view can provide.





# GET TO KNOW OUR LAND

A tour of Leça da Palmeira's  
cultural heritage

## QUINTA DE SANTIAGO MUSEUM

RUA VILA FRANCA, 134

Casa de Santiago, designed by the Italian architect Nicola Bigaglia and believed to be concluded at the end of the 19th century, was the residence of the Santiago de Carvalho family. In order to preserve and disseminate the historical memory of Matosinhos and Leça da Palmeira through art, it was converted into a museum in 1996. The estate can be visited from Tuesday to Sunday, between 10am and 6pm. On the ground floor, there is a kitchen and coal room, on the second floor, beside the entrance hall, two lounges, a dining room and a conservatory. On the third floor, the bedrooms house the museum's art exhibitions and, in the attic, the former servants' quarters. In the gardens, visit the Irene Vilar Space. In the former stables, there is now an auditorium and educational areas for workshops. Don't leave without closely admiring the Giant Waterfall. Measuring approximately 15 sqm, featuring around 300 pieces and figures, it recreates life in Leça da Palmeira in the 1920s and 1930s, when this region was a popular location for summer holidays.



○ 17 MIN  
— 1400 M



## NOSSA SENHORA DAS NEVES FORT

RAMPA DO CASTELO, 25

Built immediately following the Restoration of Independence, in 1640, for the purpose of protecting the maritime coastline from the Spanish and pirates, the Nossa Senhora das Neves Fort is one of Leça da Palmeira's most iconic constructions. This fort, along with the S. João da Foz and S. Francisco Xavier forts, was part of the city of Porto's line of defence. In the mid-19th century, it ceased its military function and today houses the Port of Leixões captaincy. But this in no way diminished its prestige, quite the contrary. In 1961, the fort was classified as a Property of Public Interest, much because of its fortified four-pointed star-shaped structure, protected by sloping ramparts and protruding sentry boxes. Although it cannot be visited, every year, in the month of July and during the Os Piratas (*The Pirates*) festival, the fort opens its doors to the community and, in the vicinity, there are treasures hunts, masked balls, juggling and fire performances, pirate trials, sword fighting and many other activities, always accompanied by food and dessert stalls allusive to the era.

🕒 19 MIN  
↔ 1500 M



## SEASIDE

AVENIDA DA LIBERDADE

In 2019, the seafront promenade designed by Siza Vieira received a sculpture by the visual artist and painter Pedro Cabrita Reis, one of the principal ambassadors of the neo-minimalist movement in Portugal. Entitled *A Linha do Mar (The Sea Line)*, it is comprised of five groups of iron beams painted white. The piece extends across 40 metres and features vertical beams of various sizes mounted on horizontal beams, presented as a "new perspective on the maritime horizon".

🕒 10 MIN  
↔ 800 M



Also designed by the architect Álvaro Siza Vieira and located at Leça beach, although it may not look it, the pool already has more than 50 years of history. Inaugurated in 1960, this space is comprised of a set of saltwater pools, wafted by the sea breeze.

## OCEAN POOL

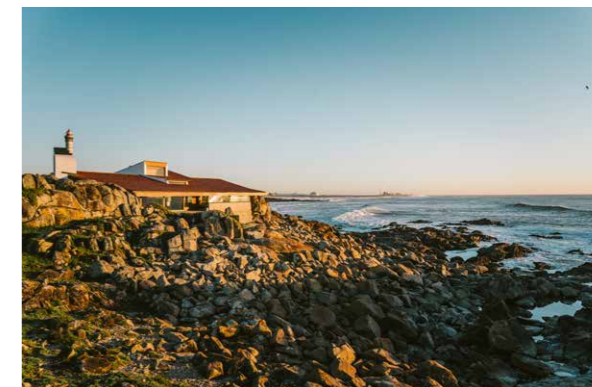
AVENIDA DA LIBERDADE

🕒 3 MIN  
↔ 230 M

## LEÇA LIGHTHOUSE

RUA CORONEL HÉLDER RIBEIRO

These are the facts: 96 years old, 46 metres high, 3.5 metres in diameter, 57 metres above sea level, this is the second highest of the 30 lighthouses in the country, and it was the last to be built in continental Portugal. The lighthouse began operating in 1926 and has been subject to several improvement works over the years. For example, in 1950 an elevator was installed to access the tower, an extremely useful intervention, as the building has a total of 225 steps. Fourteen years later, the lighthouse was connected to the public electricity grid and was equipped with a 3000-watt lamp that provided a luminous range of 60 nautical miles, in other words, over 110 kilometres. At the end of the 1970s, the power was reduced and, today, this white light reaches up to 28 nautical miles (52 kilometres). It also stands apart from other lighthouses due to its unique signal: three light flashes every 14 seconds.



## A CASA DE CHÁ DA BOA NOVA

RUA DA BOA NOVA

Today this tea room houses a restaurant with two Michelin stars which, at the end of last year, received the "Portugal's Best Restaurant 2021" distinction by the World Culinary Awards, a sister event of the World Travel Awards. But it wasn't always this way. After being looted and vandalised, Casa de Chá da Boa Nova was abandoned for many years. In 2014, invited by the municipality, chef Rui Paula turned this iconic space, classified as a national monument in 2011, into one of the hottest restaurants in the country. Designed in the 1960s and built on the rocks at the west end of Boa Nova beach, beside the chapel with the same name, this was one of Siza Vieira's first projects. Mentioned regularly in architecture routes from all over the world, the structure stands out for its use of materials like wood and glass, creating a symbiosis with its location, nestling into the rocks and inviting the sea in through large windows.

🕒 5 MIN  
↔ 400 M



# FIVE WONDERS OF LEÇA DA PALMEIRA

What you really need to know



## THE IMPRESSIVE TITAN

Anyone admiring the Leça da Palmeira coastal landscape cannot ignore the enormous crane that appears against the horizon. There used to be two, one on the north pier and another on the south pier. The latter, located on the Matosinhos side, was dismantled ten years ago to be restored, an operation that did not go well and set off explosions and a fire. Both cranes are steam-powered, move on tracks and came from Lille, France, when construction of the Port of Leixões began on 13 July 1884. They helped build the seawalls, carrying tons of stones that allowed land to conquer the sea. Today, this slightly rusty, almost 140-year-old crane is an unavoidable symbol of Leça da Palmeira and one of the few Titans of this size in the world. It can be visited every Friday, Saturday and Sunday, between 10am and 5pm.

## MAKING MUSIC FOR HALF A CENTURY

After 50 years of navigating winds and tides, Batô, beside Leça Castle, is one of the oldest nightclubs in the country and the oldest in Porto. Considered by many as a legendary nightlife spot, the space features an unusual décor, which makes it even more special. Influenced by the sea close by, a nautical theme prevails, with hatches, a helm and an iron anchor said to have belonged to an old ship that sank in the mouth of the Douro River. Despite all its ups and downs, Batô, which opened on 30 November 1971 and has witnessed dictatorships and pandemics, has always stayed afloat, with its head held high, passing on the best rock that life has given us.

## A 539-YEAR-OLD LADY

Crafted from Ançã stone, a light-coloured limestone that is very common in the Cantanhede region, this statue of Our Lady of the Conception exhibited in the Leça da Palmeira parish church, is one of the council's most important works of art. It is almost two metres high and was sculpted in 1483 by the master from Coimbra Diogo Pires "The Elder", considered the last great Portuguese sculptor of Gothic art. Commissioned by King Afonso V, the sculpture depicts the Virgin Mary holding the Child and, at the time, cost 23 thousand réis.



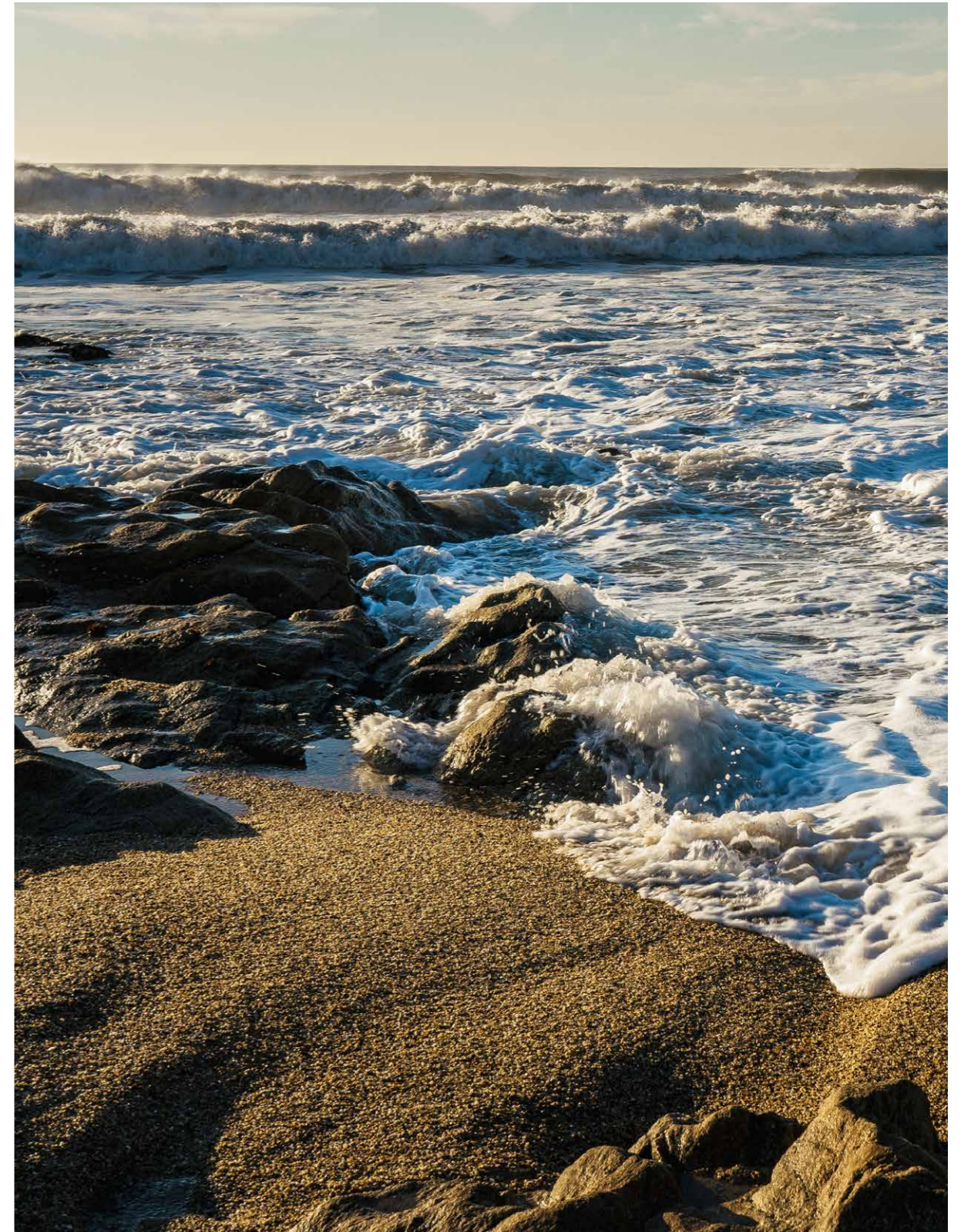
## DISCOVERING ANTÓNIO NOBRE

Engraved in a rock at Boa Nova Beach, there is an excerpt of a sonnet by António Nobre, a beloved poet from the region. Born in Porto, on rua de Santa Catarina in August 1867, it was in Leça da Palmeira that Nobre spent his childhood and adolescence, where his father, emigrated from Brazil, had a farm. This is where the author of 'Só' (*Alone*) wrote most of his poetic work, and Leça did not spare any tributes. In addition to the sonnet engraved in stone — "Na praia lá da Boa Nova, um dia/ Edifiquei (foi esse o grande mal)/Alto Castelo, o que é a fantasia,/Todo de lápis-lazuli e coral!" (*On Boa Nova beach, one day/ I built (that was the big mistake)/ A tall castle, which is fantasy,/ All in lapis-lazuli and coral!*) — there are also sculptures representing the poet and his inspiring muses, by the sculptor Barata Feyo, from 1974; a bust of the poet in Largo António Nobre, adjoining the street where he lived; a park with his name; as well as a monument designed by Álvaro Siza Vieira near Boa Nova Beach.



## TREKKING THROUGH THE "HIDDEN BANKS"

The company Architectours, created by an architect and a historian, organises tours that do not appear in tourist guides, among which are treks through the "hidden banks" of the Leça River. Along ten kilometres, you can follow the course of the river to its mouth, through rural and industrial landscapes. "We will look towards the new Green Corridor, passing the Leixões railway to a small trail at Carro bridge, crossing riverbanks, medieval bridges and ancient watermills, ending with a fabulous view over the Port of Leixões", explains the organisation. The trek lasts around five and a half hours. To schedule, simply visit the [architectoursporto.com](http://architectoursporto.com) website, contact via WhatsApp (91 043 0259) or email [architectoursporto@gmail.com](mailto:architectoursporto@gmail.com).





# A JOURNEY THROUGH THE FLAVOURS OF LEÇA

Take an unforgettable journey through the flavours of Leça. Enjoy a croissant-shaped snack at the closest bakery. Savour a gourmet experience with Michelin stars or traditional cuisine. Or just sit on a patio on the promenade to enjoy a coffee and the sea view. This is how to live and savour Leça da Palmeira, where the traditional and contemporary come together.

## LESSA

Featuring a counter covered in Portuguese tile and an impressive ceiling lamp that gives the space style, Lessa is the restaurant we all want close to home. André Pinto Baptista is the chef behind the gastronomic creations offered by this cosy restaurant that accommodates little more than ten patrons at a time. Enjoy snacking on the Bairrada croquettes, tartars, ceviches and 'pica-pau' beef. To satisfy your appetite for the rest of the day, there are sandwiches with sirloin, prosciutto and egg, or small rice stews — from the sea, or with beans and tender pork cheeks you can eat with a spoon. To finish off your meal, the mythical Lessa pastel de nata with a coffee.

RUA SANTOS LESSA, 129  
@LESSA\_RESTAURANTE  
221 141 045



## SEIVA

Chef David Jesus, who's experience includes various Michelin-star restaurants (among which Diverxo by David Muñoz, in Madrid), opened a space dedicated to vegetarian cuisine. "This is market cuisine, humble, dynamic, with global influences and flavours. Seiva is an expression of nature", the chef explains, striving to give customers "an experience with plants, that brings them close to the land". For this, there is toast made from slow rise bread from the Garfa bakery to start the day; bowls of oats, bulgur or quinoa with granola and peanut butter; eggs; pancakes and homemade cakes. For lunch and dinner, take your tastebuds on a journey with dishes like Thai lasagne with stewed tofu, spices and coconut, Thai curry and roast tomato sauce; barley risotto with pumpkin and saffron; and an apple pastry with celery root and sesame.

RUA SARMENTO PIMENTEL, 63  
WWW.SEIVARESTAURANTE.PT / @SEIVA.RESTAURANTE  
910 546 756



## CASA DE CHÁ DA BOA NOVA

When they invented the expression "Feast your eyes", they were certainly talking about Casa de Chá da Boa Nova. It's impossible not to be awed by the space's architecture. Conceived by Siza Vieira and built on the rocks, the tea room is classified as a National Monument and is included in the International Architecture Route. It is also impossible not to be amazed by the seascape seen from the house's large windows, or by the delicious and creative cuisine prepared by chef Rui Paula. This Michelin two-star restaurant offers a choice of two menus. One that lets incredibly fresh fish and shellfish shine, and another where vegetables are the star.

RUA DA BOA NOVA  
WWW.CASADECHADABOANOVA.PT / @CASACHABOANOVA  
229 940 066



## BOAVIDA

Since 2018, Boavida offers colourful bowls full of healthy ingredients to anyone who comes in, at any time. For breakfast, there is a generous menu of toasts, with smoked salmon and fennel or fried eggs and bacon. Tapiocas, pancakes, bowls of yoghurt with açai or overnight oats, finish the menu designed to start the day. For lunch, there's hummus with veggies, or guacamole with nachos to open your appetite, followed by bowls with different fillings, like chicken, shrimp, falafel and tuna, as well as various hamburgers, sandwiches and wraps. Complete your meal with a natural juice or smoothie, and a dessert. You can choose from coconut and lime mousse, vegan banoffee pie, brownie with ice-cream or a slice of banana bread.

RUA ANTÓNIO NOBRE, 29  
BOAVIDA.COM.PT / @OAVIDA.LDP  
912 190 080



## BONIFÁCIO

Amidst a full Mamma Mia vibe (red gingham napkins and a Vespa parked in the middle of the restaurant, give the space a truly Italian ambiance) savour fresh pastas and enjoy real Neapolitan pizzas cooked in a wood oven. Lasagne Bolognese, tagliatelle à la carbonara, tomato risotto or mushroom gnocchi with stracchino cheese and truffle cream, are just some of the dishes you can order. In the pizza championship, treat yourself to the classics, like Margherita with tomato sauce, fresh mozzarella and basil, or bold suggestions like Zucca, prepared with roast pumpkin, taleggio and rosemary.

RUA DO CASTELO, 15  
WWW.BONIFACIORISTORANTE.PT / @BONIFACIO.RISTORANTE  
964 495 416



## TERMINAL 4450

A cooler atmosphere and good vibe are hard to find in just one space. First, because Terminal 4450 can only be accessed by a boarding bridge, and then because it has great cocktails, finger-licking snacks like sirloin sandwiches, pica-pau beef, chicken wings and grilled ribs, and there's always room for desserts like the decadent chocolate cake or a slice of lemon pie with thyme ice-cream. As for the entrées, beef is key. There's the cutlet aged for 45 days, T-Bone, 'picanha' rump steak and Black Angus. All accompanied with smokehouse rice, fries or creamed spinach.

AVENIDA DOUTOR ANTUNES GUIMARÃES,  
TERMINAL DOS PASSAGEIROS  
WWW.TERMINAL4450.PT / @TERMINAL4450  
919 851 933



## NEW CASARÃO DO CASTELO

With the ocean so close by, our list wouldn't be complete without a seafood restaurant, or two. The New Casarão do Castelo, located less than 80 metres from Casarão do Castelo, the first and original that opened more than 30 years ago, specialises in fresh shellfish and grilled fish. Lobster, tiger prawns, Bulhão Pato-style clams, stuffed crab, shellfish rice or açorda (*bread pudding*), are just some of the options that are always available. This new space, inaugurated in 2019, also nods to cuisine from other latitudes, adding risottos and sushi to the menu, the latter in classic or fusion versions.

LARGO DO CASTELO  
WWW.CASARAODOCASTELO.COM / @NOVOCASARAOCASELO  
229 951 626 / 968 048 064



## FAVA TONKA

This is without doubt one of the best vegetarian restaurants in the country. Nuno Castro, the chef running this space by Grupo do Avesso — which also owns restaurants like Terminal 4450, Esquina do Avesso and Sushiaría, all in Leça da Palmeira —, creates fun and bold cuisine, using mainly plant-based ingredients. This feat has earned him five stars, the highest score given by the Time Out food critics. Dishes praised include the onion, truffle and São Jorge cheese soup, and desserts made with crème brûlée, honey biscuit, lavender ice cream, and honey and pollen caramel.

RUA SANTA CATARINA, 100  
WWW.FAVATONKA.PT / @FAVATONKAPT  
915 343 494



## A MARGARIDA

Open for more than two decades, this traditional restaurant makes mouth-watering food. The service is old-school, attentive and thoughtful, there are crisply ironed tablecloths and family photos, fine china and Arraiolos carpets decorating the stone walls. Leading the troops is Margarida Silva, the cook, who fills the tables with shrimp açorda (*bread pudding*) served in bread toasted in the oven, one of the restaurant's delicacies. There are also pots of seafood or 'blood' rice, hake fillets or codfish, beef cataplana, steaks and lots of shellfish by the kilo. To finish, order a slice of almond pie or Abade de Priscos egg pudding, one of the house mousses, orange cake or French toast.

RUA DO CASTELO, 59  
WWW.AMARGARIDA.EATBU.COM  
@ REST.MARGARIDA.LECADAPALMEIRA  
229 961 402



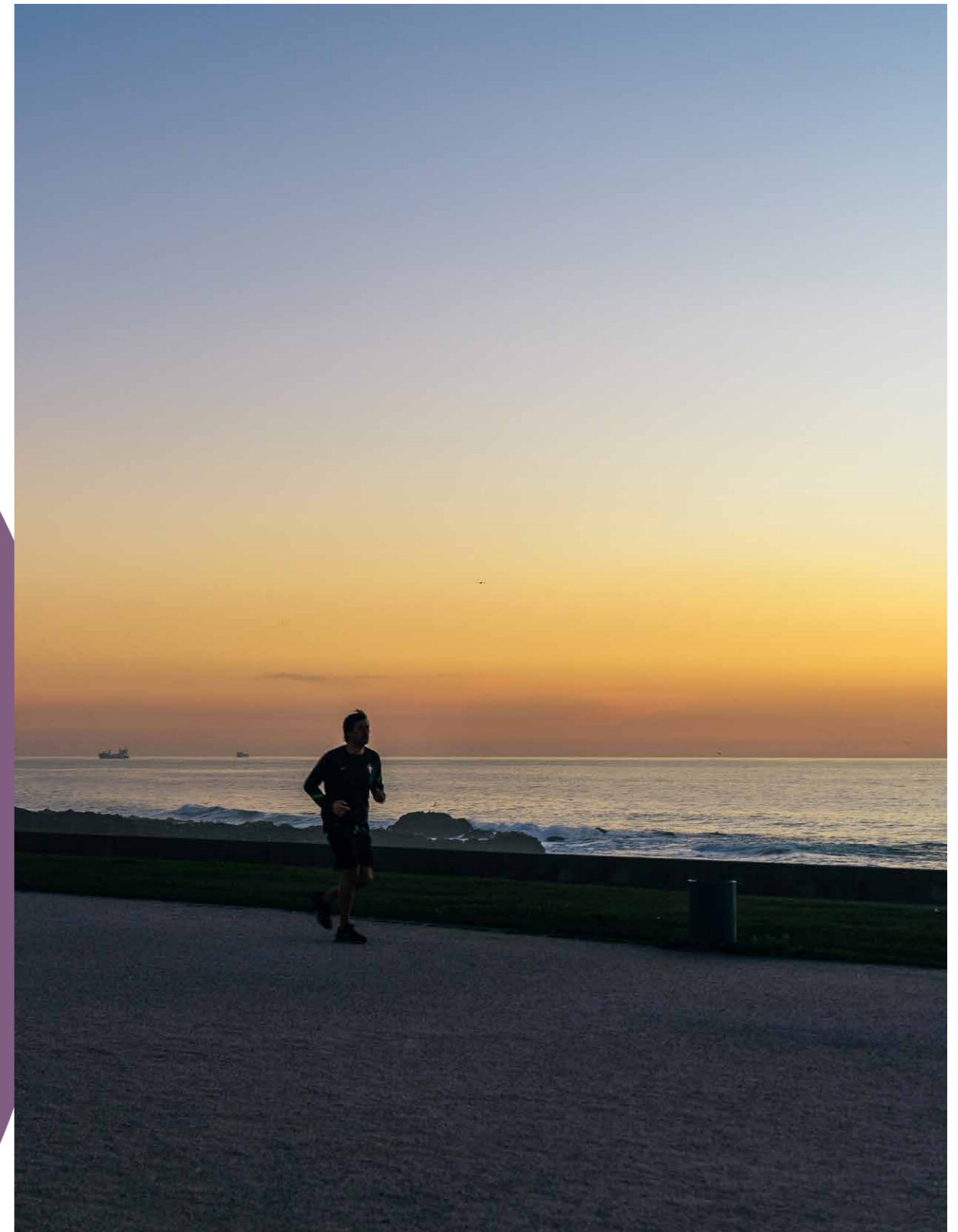
## AMMAR

Beet gazpacho and suckling pig bao with smoked mayonnaise for starters; broth rice with shrimp, crayfish, scallops and mussels, or octopus confit for the seafood dishes; or, grilled Black Angus steak, accompanied with runny eggs, wild mushrooms and Pata Negra prosciutto, for the meat dishes. These are just some of the suggestions in this gorgeous restaurant that blends classic with contemporary, featuring a fabulous sea view. Matilde Amil Silva's kitchen also creates delectable desserts. Traditional options with unbeatable combinations, like pumpkin, walnuts and Serra cheese. And others that are a pleasant surprise, like the eucalyptus cream with peanut crumble and Jack Daniels ice-cream.

RUA DE FUZELHAS, 5  
WWW.AMMAR.PT / @RESTAURANTEAMMAR  
964 371 729

# IN SHAPE

Leça is the perfect place for an active and healthy lifestyle





## SURFING

Leça da Palmeira is the favourite spot among Porto surfers, and you can take out your surf board all year round.

Featuring waves that can reach over 2.5 or 3 metres, offshore winds are easterly and the best swell comes from the west, with waves on the right and left. It is worth visiting Galeria Surf Leça, a shop and art gallery located in front of Leça da Palmeira beach which promotes art and culture involving saltwater sports.

### SURF LEÇA

AVENIDA DA LIBERDADE, 44  
4450-718 LEÇA DA PALMEIRA



## VELA

Founded on 7 July 1960 by a group of 14 sailors and nautical sport lovers, this iconic club has trained top athletes and taught recreational seafaring arts to many residents and neighbours of Leça da Palmeira. Despite having a special vocation for light sailing, the club offers a diverse choice of options to learn, including Amateur Scuba Diving and Sport Fishing.

### MOLHE NORTE - MARINA PORTO ATLÂNTICO

450-718 LEÇA DA PALMEIRA  
WWW.NAVALDELECA.COM



## PADBOL

A sport that combines two big hits: football (soccer) and padel. It can't go wrong! Played on a traditional court similar to tennis, enclosed by very strong acrylic or glass walls, instead of using rackets, players use their feet and head to pass the ball to their teammates or adversaries. If you haven't tried this new sport, check it out at Clube Padbol Matosinhos.

### PADBOL MATOSINHOS

R. VELOSO SALGADO, 803  
4450-801 LEÇA DA PALMEIRA

## HEALTHCLUBS

For the more purist and eclectic, Ginásio Elite Corpus XVIII and Complexo Desportivo Leça offer good fitness infrastructures. With so many group classes, fitness exercises and functional training, you are sure to find something that will make you want to exercise.

### GINÁSIO ELITE CORPUS XVIII

R. GONÇALVES ZARCO, 1129  
4450-685 LEÇA DA PALMEIRA

### COMPLEXO DESPORTIVO LEÇA

R. BATERIA, 225  
4450-800 MATOSINHOS

## CROSSFIT

Attracting a growing number of fans in Portugal, this option on the sports menu is for the fittest. Join the Move Better crossfit box.

### MOVE BETTER

R. GONÇALVES ZARCO, 1663  
4450-685 LEÇA DA PALMEIRA

## PADEL

Due to its social nature and easy learning, Padel tennis is a sport that grabs you from the very first game. Anyone who tries it is sure to want to play again. In Leça da Palmeira, Mar Padel and PadLovers Matosinhos are some of the Padel club options.

### MAR PADEL

R. VELOSO SALGADO, 1135  
4450-801 MATOSINHOS

### PADLOVERS MATOSINHOS

R. GONÇALVES ZARCO, 1706  
4450-685 MATOSINHOS

## TENNIS

Strolling through the leafy boulevards of the Quinta da Conceição public park, among oak and eucalyptus trees, you will find an excellent swimming pool and two tennis courts. Designed by Fernando Távora, the Tennis Pavilion building is also a treat for architecture lovers, as it features key themes in modern architecture, like open spaces and use of the materials' plasticity. Come for a jog or visit, but add this iconic space to your list in Leça da Palmeira.

### QUINTA DA CONCEIÇÃO TENNIS COURTS

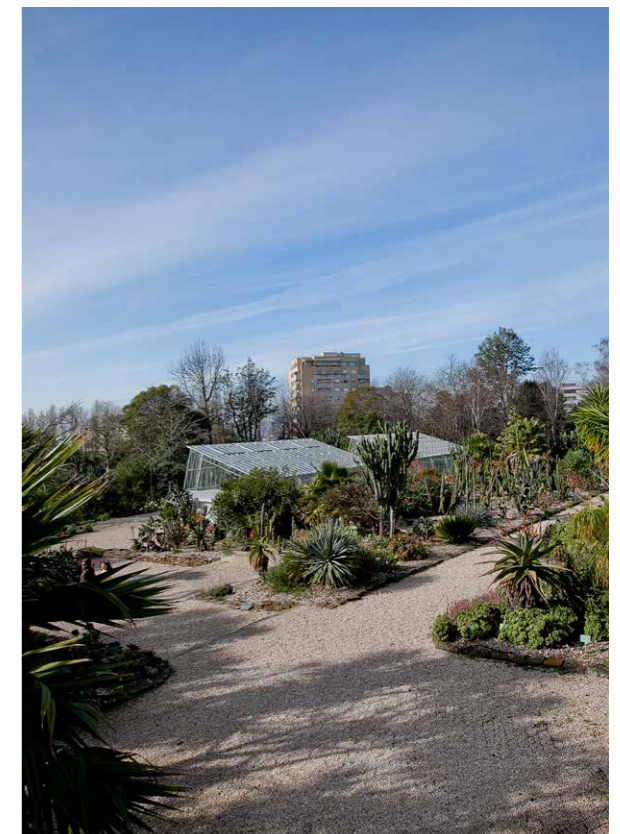
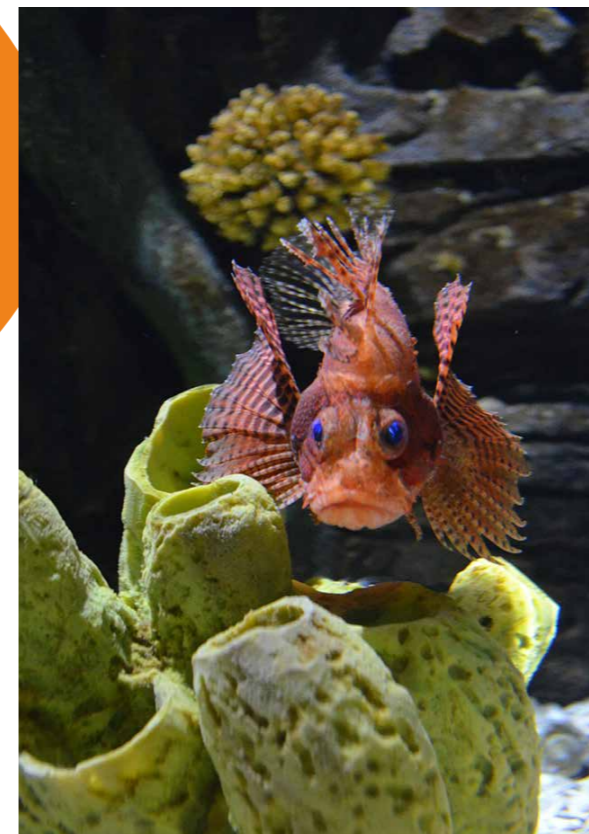
RUA VILA FRANCA, MATOSINHOS  
4450-803 LEÇA DA PALMEIRA

# LEÇA LITTLE ONES

The coolest options for kids of all ages

## ENTERTAINING THE KIDS

Porto's Parque da Cidade, one of the largest urban parks in the country, measuring 83 hectares and with ten kilometres of trails to run, walk or cycle, is just a ten-minute drive away. The park is rich in fauna — home to wild ducks, swans, geese, water hens, many fish and frogs — and flora. The space features 70 species of trees, more than 40 species of shrubs, various fruit trees, and many other aquatic species. But there's even more to see and entertain the kids around here. The Pavilhão da Água (*Water Pavilion*), which was a success at Expo 98, was re-installed here and invites visitors to embark on an immersive journey through mountains, plains and oceans. If you want to stay under water, Sea Life, Porto's aquarium with an aquatic tunnel and many sensory activities, is also in the area and delights the little ones. Around 15 minutes away, there's another failproof plan: a visit to the Porto Botanical Gardens and the Biodiversity Gallery. Located beside each other, both breathe science and nature and offer a calendar full of workshops and exhibitions.







## SWIMMING & SPLASHING IN THE MUNICIPAL POOLS

The Piscina das Marés (*Ocean Pool*) is one of the greatest attractions in Leça da Palmeira, especially in the summer season (from 15 June to 15 September), when it is fully operational and open to the public. This saltwater pool was built in the 1960s on the rocks and designed by Álvaro Siza Vieira. It is a landmark of 20th century architecture and was classified as a National Monument in 2011. Also signed by the same Matosinhos architect is the Quinta da Conceição swimming pool. Situated in the municipal park, the pool was inaugurated in 1965 and is also only open in the summer months.



## ICE-CREAM ANYONE?

Vanilla, chocolate, hazelnut, lemon, banana, mint, strawberry or raspberry. These are just some of the flavours offered at Gelateria Gelato Mio, on travessa Henrique Schreck, to treat the kids when their bellies start grumbling after all the fun. This space also serves elaborate ice-creams full of fruit, smoothies of many flavours, waffles and crepes and, if you prefer something heartier, brunches with croissants, jams and juices. At Estio ice-cream shop, on rua Sarmento Pimentel, right on the seafront, aside from the ice-cream and sweets, there are also toasted sandwiches and hotdogs for those who prefer savoury options.

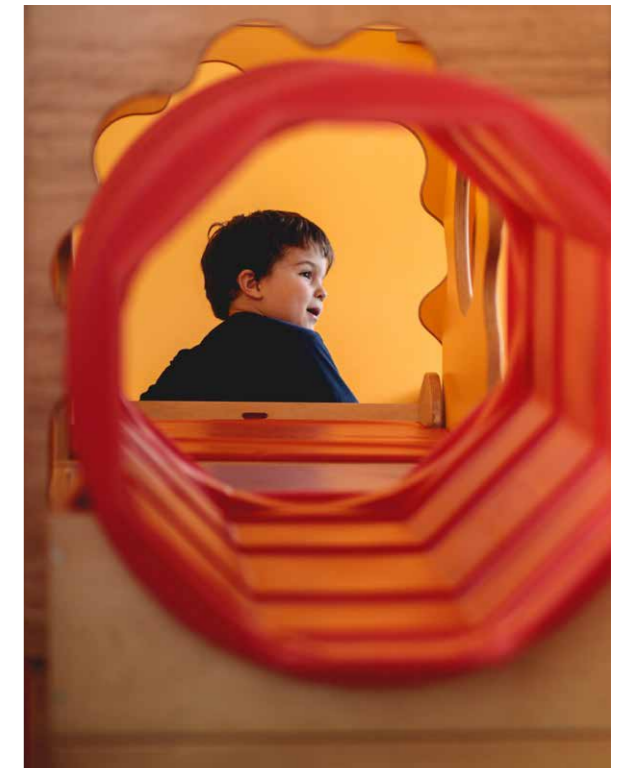
## PLAYGROUNDS

Given its size, the Parque Infantil Florbela Espanca playground is probably the best known and most popular among kids. Refurbished and equipped with new infrastructures in 2015, it features slides, rope and birds nest swings, sandboxes for the little ones, a slider for adventurous kids, soccer pitch and basketball court, and much more. For the grownups keeping watch, there's fitness equipment facing the beach. An unbeatable two-in-one! The Parque Infantil Jardim de Santana playground, located beside the Santana chapel, and the playground at the Quinta da Conceição park, are also good options if you want to extend the fun and spend less time in line-ups.



## STIMULATING CHILD DEVELOPMENT THROUGH ART & MUSIC

Many skills are acquired through play in the early years, and the Gymboree, a child development centre that promotes activities for kids and babies from birth to five years old, has that mission as its premise. This space gives children the possibility to explore sensory, psychomotor, socio-emotional and cognitive stimuli through fun. Therefore, here you'll find sessions involving music, art, and cooking, among others.



# Flower Towers close to the best of Leça da Palmeira.

## FLOWER TOWERS

## BEACHES

- 1 Praia do Aterro
- 2 Praia de Leça da Palmeira
- 3 Praia Azul
- 4 Praia da Senhora da Boa Nova
- 5 Praia dos Beijinhos
- 6 Piscina das Marés

## RESTAURANTS

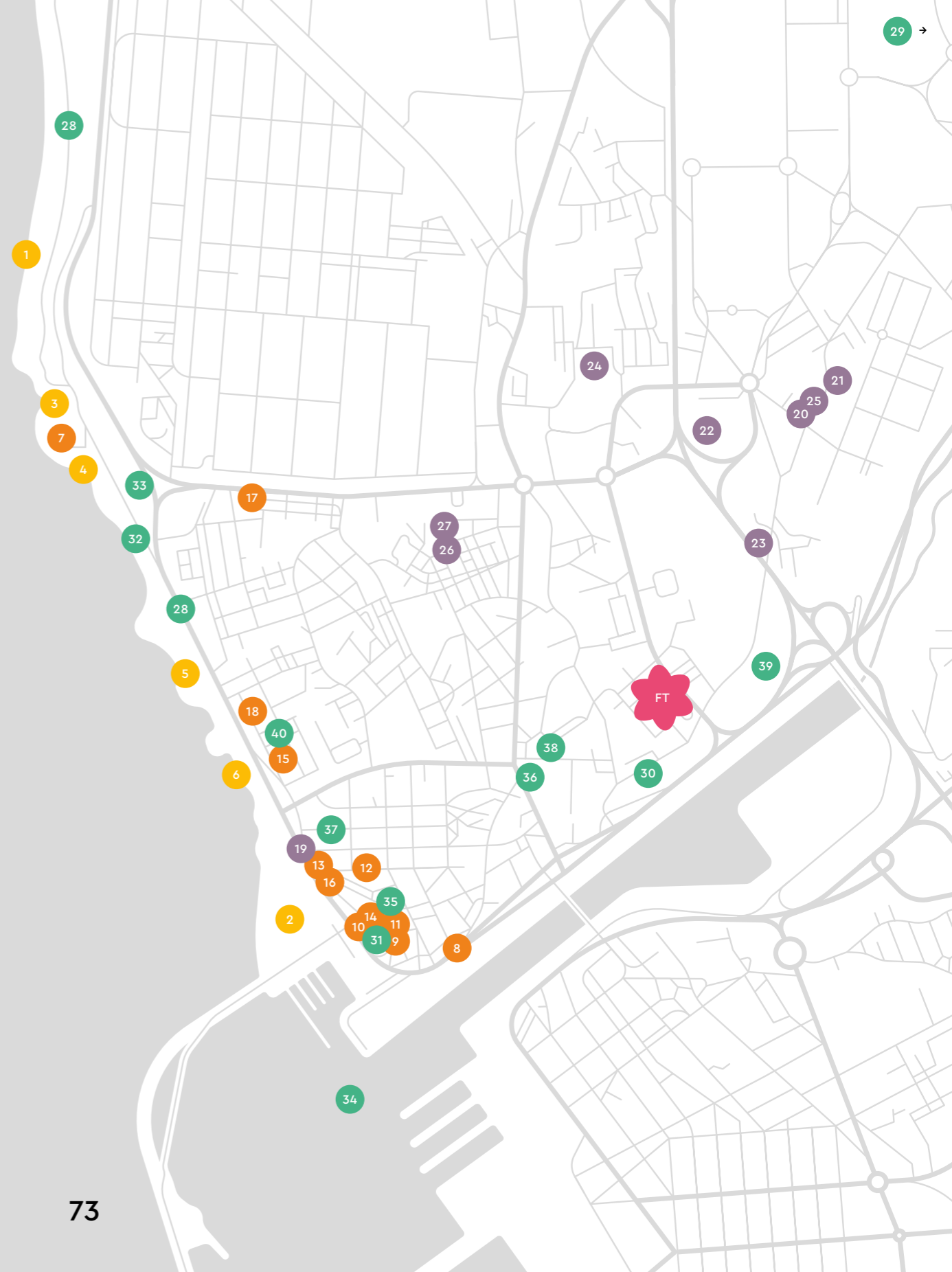
- 7 Casa de Chá da Boa Nova
- 8 Terminal 4450
- 9 Fava Tonka
- 10 Bonifácio
- 11 Novo Casarão do Castelo
- 12 Lessa
- 13 Boavida
- 14 A Margarida
- 15 Seiva
- 16 Ammar
- 17 Gelato Mio
- 18 Gelataria Estio

## SPORTS

- 19 Surf Leça
- 20 Mar Padel
- 21 Padlovers Matosinhos
- 22 Padbol Matosinhos
- 23 Ginásio Elite Corpus XVIII
- 24 Complexo Desportivo Leça
- 25 Move Better
- 26 Pavilhão do G.D.C. COHAEMATO
- 27 Escola de Yoga

## LEISURE

- 28 Promenade
- 29 Green Corridor
- 30 Quinta de Santiago Museum
- 31 Nossa Senhora das Neves Fort
- 32 Seaside
- 33 Leça Lighthouse
- 34 Leça Titan
- 35 O Batô
- 36 Leça da Palmeira Parish Church
- 37 Florbela Espanca Playground
- 38 Jardim de Santana Playground
- 39 Quinta da Conceição Municipal Park
- 40 Gymboree





VIZTA

WITH CONTENT BY

TimeOut